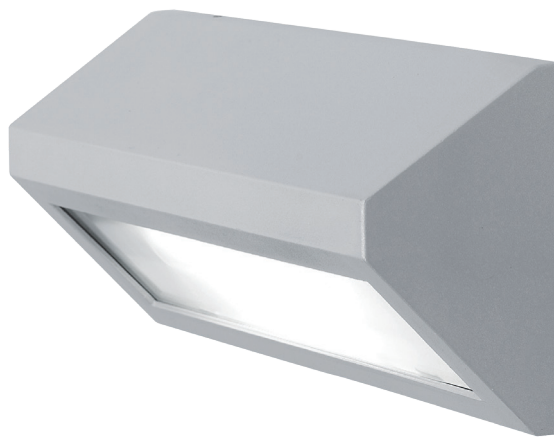


1356

APPLIQUE



SPECIFICATIONS:

Forward
throw

1.8 kg

CRI
82+CRI
70+

Class I



IP54



CE

5
Year warranty

Made in Australia

CONSTRUCTION & DESIGN

- Surface mounted LED exterior forward throw wall light
- Constructed in die cast aluminium alloy and finished in durable polyester powdercoat paint
- Tempered frost glass cover silicone gaskets and stainless steel fasteners provide IP54 protection
- Efficient forward throw optics with efficient cut off control ensures almost no-upward illumination

OPTICAL & THERMAL PERFORMANCE

- LED thermal management incorporates both conduction and natural convection to transfer heat rapidly away from LED source to achieve maximum life of LED
- High efficiency optics for brilliant optical control and excellent vertical illumination with no harsh cut off and ultra low glare

ELECTRICAL SYSTEM

- Supplied standard with an integral leading and trailing edge dimmable driver and terminal block
- Power factor > 0.9 with active power factor correction
- Input voltage 220-240V, 50/60 Hz

TECHNICAL PERFORMANCE

- 13W total system power consumption with overload and short circuit protection
- >65,000 hours lifespan (L70)
- Premium quality LED Module with high lumen output per watt
- Chromaticity tolerance (macAdam step) - 2
- Available in 3K, 4K or 5K colour temperature with low colour shift over time


CODE ORDERING GUIDE:

PRODUCT CODE

-

COLOUR CODE

Example: 1356-3K-13W-03

SYSTEM POWER	COLOUR TEMP.	 74x69° BEAM ANGLE	HOT LED LUMENS	LUMINAIRE LUMEN OUTPUT
		PRODUCT CODE		74x69°
13W	3K	1356-3K-13W	1519	1030
	4K	1356-4K-13W	1607	1065
	5K	1356-5K-13W	1568	1062

COLOUR CODE

-03		Textured White
-07		Textured Black
-11		Textured Silver

